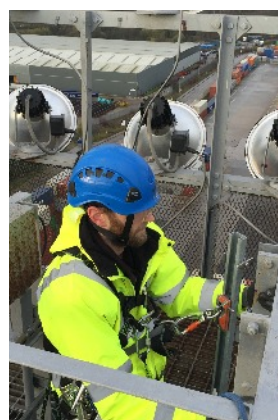
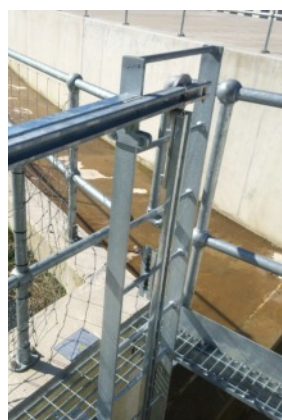


# SAFETY AT HEIGHT

soil

Height Safety for  
the Workplace



**GlideLoc® GuideRail**  
Fall Protection for Existing ladders

**Honeywell** | Fall Protection



# GlideLoc® Vertical Height Access Ladder System

The GlideLoc GuideRail system provides an innovative solution for vertical existing ladders that is easy-to-use, requires minimal maintenance and provides superior safety. Systems are available in aluminium, galvanised or stainless steel. The easy-climb GlideLoc system offers hands-free fall protection that ultimately increases worker mobility, safety and productivity.

**Easy to Order  
and Install**



## Integrated Shock Absorber



### Ideal for Permanent Ladder Applications:

- Wind Power / Turbines
- Telecommunications
- Utilities
- Industrial Facilities
- Drilling Rigs / Platforms
- Shipbuilding
- Crane Installation
- Confined Space

Systems are available in easy-to-install kits or can be customised for your application with additional components including:

- Brackets fixing to rungs or side stringers
- Top extension for ease of stepping off the ladder
- Shaft entry device to provide easy access to manholes and roof hatches
- Foldable footrests for ladders requiring a rest platform

End-Stop

Rung Clamp\*

Vertical Rail

*Aluminum,  
Galvanized  
or Stainless  
Steel*

Fall Arrester

Rung Clamp\*

End-Stop





## GlideLoc® Fall Arresters

All GlideLoc Fall Arresters lock immediately into the GuideRail in the event of a fall.



- Smooth, quiet trailing action along the GuideRail provides an easier, more comfortable climb
- Automatic design keeps both hands free to climb
- Stainless steel catch locks at a maximum of 140mm in the event of a fall
- Integrated shock-absorber reduces the force on the worker and structure in the event of a fall
- Fall indicator alerts user to know when to remove the product from service
- Integrated swivel, auto-locking karabiner connection, aids in trailing alignment
- Design prevents insertion up-side-down - Increases worker safety by ensuring proper attachment
- No requirement to lean back while climbing - reduces fatigue. Ideal for caged ladders or confined spaces
- Ergonomically designed for easy one-hand installation - Increases

Fully Compliant with the requirements of

**EN353-1:2014**



### Body Control I Fall Arrester

Attaches at the top or bottom of the rail

- Made from stainless steel and aluminium - holds up well in corrosive environments
- Outside roller guides are protected by flexible rubber ring - offering a longer service life

### Universal II Fall Arrester

Attaches anywhere along the GuideRail

- Enables transfer onto platforms and entry onto systems where entry point is changeable
- Click-lock function - ensures proper installation - less user error
- No intermediate entry/exit gates are required
- Body is constructed of stainless steel - holds up well in corrosive environments

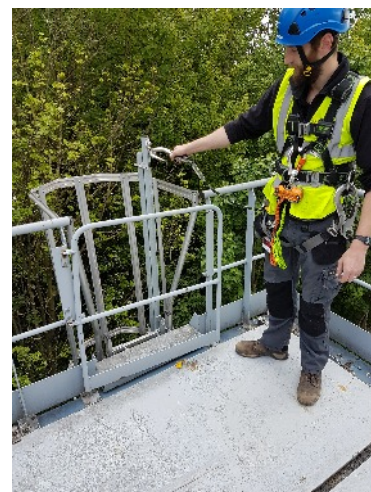
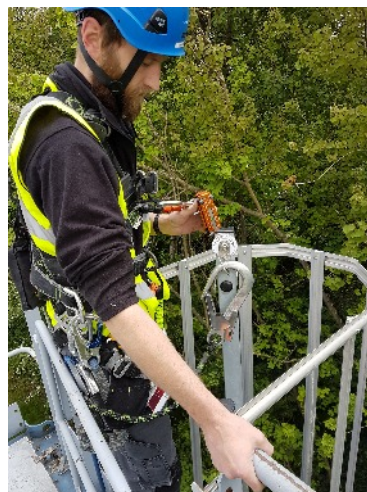










## GlideLoc® Top Extension

In applications where the user steps forward onto an upper platform, the GlideLoc GuideRail is fixed to the side of the ladder and extends above the top rung by around 1100mm. This allows the user to be fully connected until the platform is reached. There is also an EN795-Type A Eyebolt fixed to the top extension. The user can therefore attach his lanyard to this before detaching from the GuideRail.

## EN795 Eye Bolt for Safe Transfer



## GlideLoc® Kit Components

	Part No.	Description
	GLT-27441	Vertical 'Body Control I' Fall Arrester - EN353-1:2014
	GLT-27871	GlideLoc Universal II Fall Arrester WT - EN353-1:2014
	GRG-FS-SST2240	Vertical GuideRail 2240mm - Galvanised
	GRA-FS-SAL2240	Vertical GuideRail 2240mm - Aluminium
	GRS-FS-SA42240	Vertical GuideRail 2240mm - Stainless
	GAS-26027	End-Stop for Steel ladders and GuideRail -
	GAS-27136	End-Stop for Confined Space Steel ladders and GuideRail
	GAS-11634	Rigid End-Stop - Stainless Steel - For Ladders and GuideRail

	Part No.	Description
	GRG-10903	Rung Clamp - for rungs up to 25mm dia. - Galvanised
	GRG-14804	Rung Clamp - for rungs up to 26mm - 35mm dia. - Galvanised
	GRS-14809	Rung Clamp - for rungs up to 25mm dia. - Stainless Steel
	GRS-14813	Rung Clamp - for rungs up to 26mm - 35mm dia. - Stainless Steel
	GRS-19091	Stile Clamp - up to 65mm Stile - For side fix Galvanised
	GRS-21284	Stile Clamp - up to 65mm Stile - For side fix Stainless
	GLG-17065	Shaft Entering Device - Stainless Steel
	GRG-16191	Coupling for shaft entering device - Stainless Steel
	GRG-21284	Folding Footrest (250x130mm) - for Galvanised Vertical Rail

Contact us for design assistance

Tel: +44 (0)161 449 5615

Email: [sales@safety-height.co.uk](mailto:sales@safety-height.co.uk)

Web: [www.safety-height.co.uk](http://www.safety-height.co.uk)

**SAFETY**  
AT HEIGHT  
SÜH