

Söll MultiRail®

- Horizontal anchor device
- Certified according to EN 795: 01 and CEN/TS 16415:2013



Subject to technical change. Please follow our maintenance and fitting instructions.

Söll MultiRail®

Horizontal safety rail

- Available in lengths of 00 - 6,000 mm
- Mounting distance: recommended 4,000 mm - max. 6,000 mm

Material: Stainless steel, pickled

Weight: 2.7 kg/m

Part no. 17488

Standard length 3,000 mm

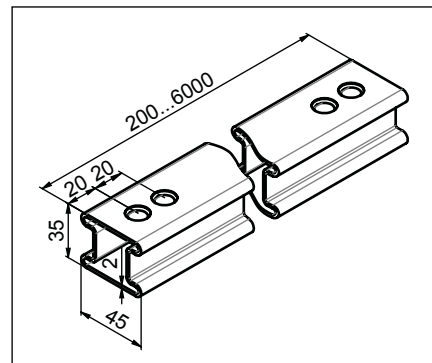
Weight: 7.9 kg/each

Part no. 24401

Standard length 6,000 mm

Weight: 16.1 kg/each

Part no. 19146



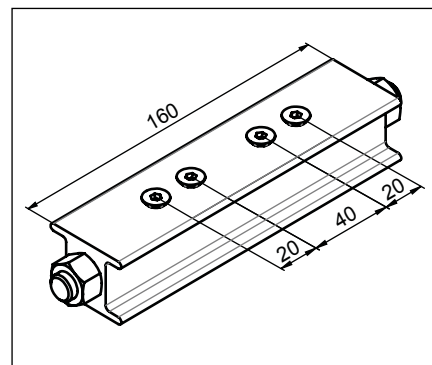
Connector

- For connecting individual rail sections

Material: Anodised aluminium

Weight: 0.5 kg/each

Part no. 17332



Rail end-stop without exit

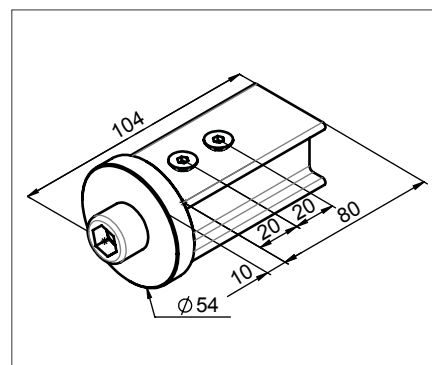
- To prevent the glider from coming off accidentally

Material: Stainless steel, pickled/

Anodised aluminium

Weight: 0.4 kg/each

Part no. 17404



Rail end-stop with exit

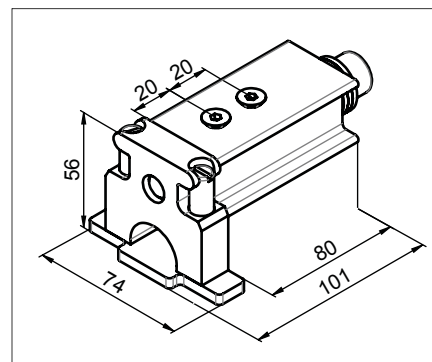
- To prevent the glider from coming off accidentally
- Removal of the glider by pressing the opening mechanism with one hand

Material: Stainless steel, pickled/

Anodised aluminium

Weight: 0.4 kg/each

Part no. 23956



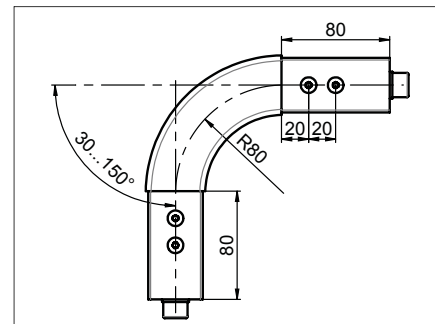
Subject to technical change. Please follow our maintenance and fitting instructions.

Söll MultiRail®

Horizontal bend

- For horizontal use as corner turn
- R = 80 mm

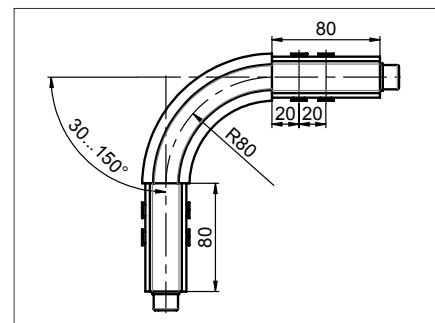
Material: Anodised aluminium
Angle: 90°
Weight: 0.9 kg/each
Part no. 17331
Angle: 30 - 150°
Weight: Depends on angle
Part no. 18311



Vertical bend

- For vertical use as corner turn
- R = 80 mm

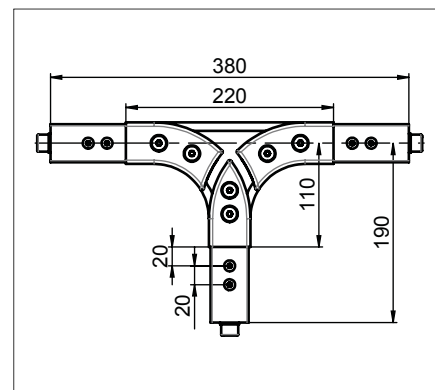
Material: Anodised aluminium
Angle: 90°
Weight: 0.9 kg/each
Part no. 17330
Angle: 30 - 150°
Weight: Depends on angle
Part no. 18999



Horizontal track change

- For safe change of travel in two directions
- The rails must be at a 90° angle to one another
- Can only be used with glider closed (part no. 17407)

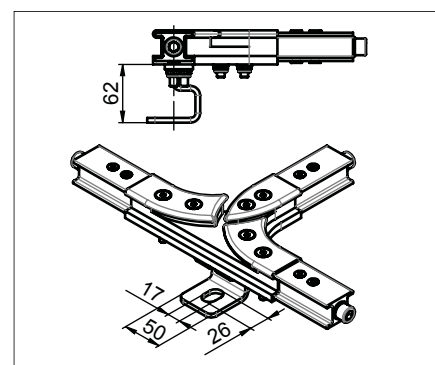
Material: Stainless steel, pickled / Anodised aluminium
Weight: 2.7 kg/each
Part no. 20449



Horizontal track change with bracket

- For safe change of travel in two directions
- The rails must be at a 90° angle to one another
- Can only be used with closed glider (part no. 17407)
- To be used when the anchor point to the structure is right under the track change
- Installation possible in combination with bracket 1 (part No. 17489)

Material: Stainless steel, pickled / Anodised aluminium
Weight: 3.2 kg/each
Part no. 21967



Subject to technical change. Please follow our maintenance and fitting instructions.

Summary of the smallest possible bending radii in mm for the Söll MultiRail®

Bent safety rail

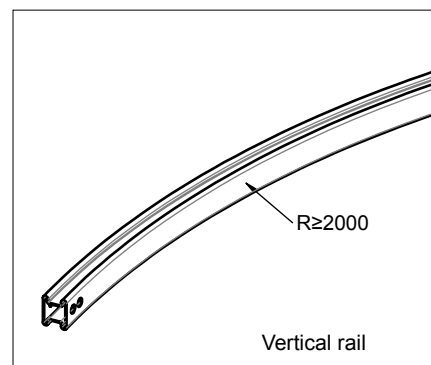
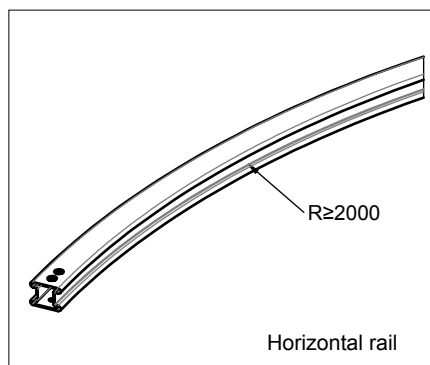
- Bending radius is at least 2,000 mm

Material: Stainless steel, pickled

Weight: 2.7 kg/m

Part no. 18269

Indicate the position of the rail (horizontal, vertical) when ordering.



Single bending

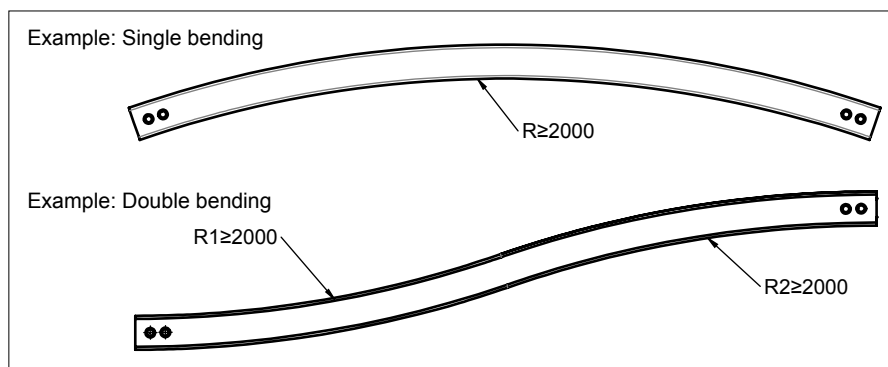
- Bending radius: min. 2,000 mm

Part no. 18270

Double bending

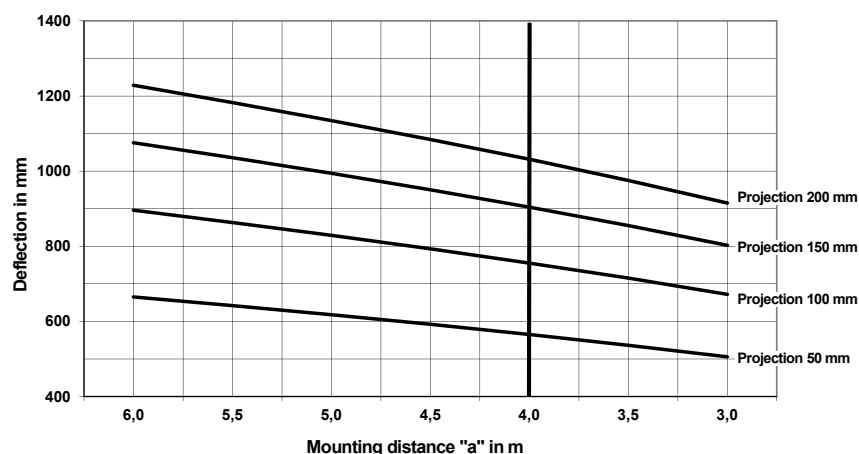
- Bending radius: min. 2,000 mm

Part no. 23177



Deflection of the guide rail for the Söll MultiRail®

The deflection depends on the mounting distance 'a' and the projection of the rail:



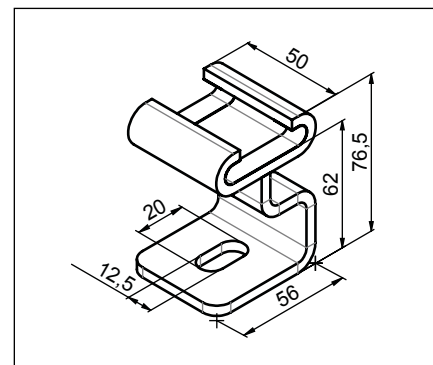
Subject to technical change. Please follow our maintenance and fitting instructions.
Subject to technical change. Please follow our maintenance and fitting instructions.

Söll MultiRail® Fixings

Bracket 1

- With Teflon easy-slide ribbons
- The rail can move freely in the brackets
- For mounting screws M1
- Screw mounting surface parallel to the rail

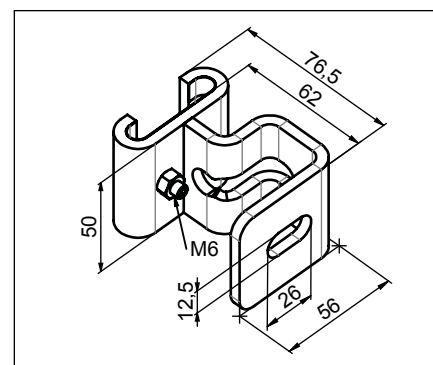
Material: Stainless steel,
pickled
Weight: 0.4 kg/each
Part no. **17489**



Bracket 1 with clamping screw M6

- With Teflon easy-slide ribbons
- For mounting screws M1
- Screw mounting surface parallel to the rail

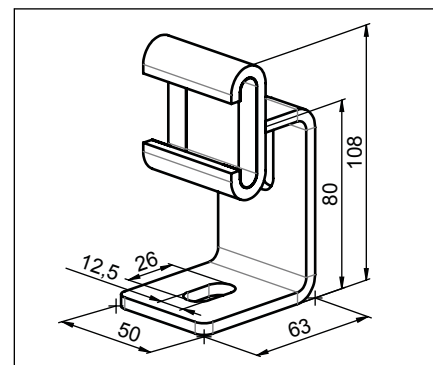
Material: Stainless steel,
pickled
Weight: 0.4 kg/each
Part no. **20168**



Bracket 2

- With Teflon easy-slide ribbons
- The rail can move freely in the brackets
- For mounting screws M1
- Screw mounting surface at right angle to the rail

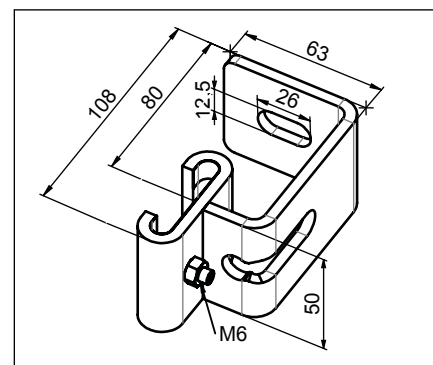
Material: Stainless steel,
pickled
Weight: 0.4 kg/each
Part no. **17112**



Bracket 2 with clamping screw M6

- With Teflon easy-slide ribbons
- For mounting screws M1
- Screw mounting surface at right angle to the rail

Material: Stainless steel,
pickled
Weight: 0.4 kg/each
Part no. **20167**



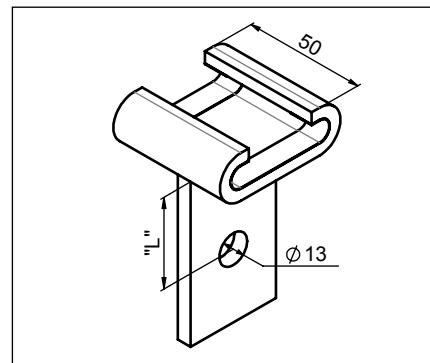
Subject to technical change. Please follow our maintenance and fitting instructions.

Söll MultiRail® Fixings

Bracket 5

- With Teflon easy-slide ribbons
- The rail can move freely in the brackets
- For overhead application
- For work in suspension
- For mounting screws M1
- Projection 'L': max. 00 mm (please indicate when ordering)

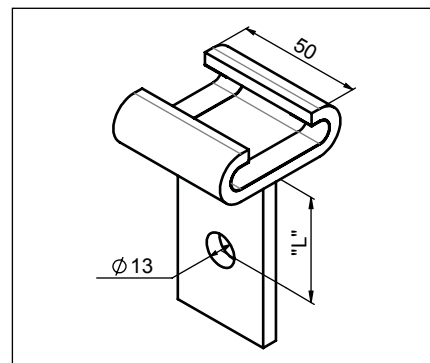
Material: Stainless steel,
pickled
Weight: 0.4 kg/each
Part no. **21031**



Bracket 7

- With Teflon easy-slide ribbons
- The rail can move freely in the brackets
- For overhead application
- For work in suspension
- For mounting screws M1
- Projection 'L': max. 00 mm (please indicate when ordering)

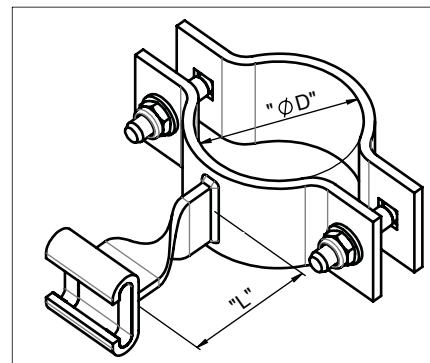
Material: Stainless steel,
pickled
Weight: 0.4 kg/each
Part no. **21677**



Clamp

- With Teflon easy-slide ribbons
- The rail can move freely in the brackets
- Projection 'L': 80 - 00 mm
- Complete with all mounting elements
- Please indicate projection 'L' when placing the order

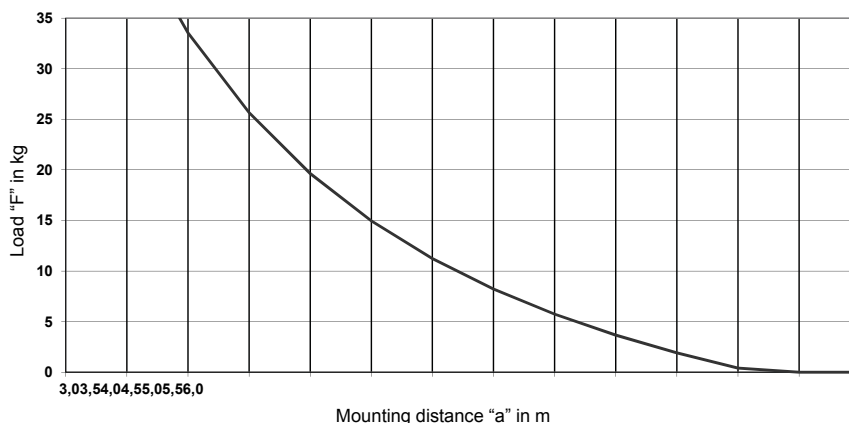
Material: Stainless steel,
pickled
Weight: Depends on size
Part no. **MR-BS-1AUSL-<Ø in mm>**



Recommended mounting distance 'a'
when using a wheeled trolley with a
retractable type fall arrester

Load 'F' definition:

self-weight of retractable type fall
arrester +
max. retraction load of the retractable
type fall arrester



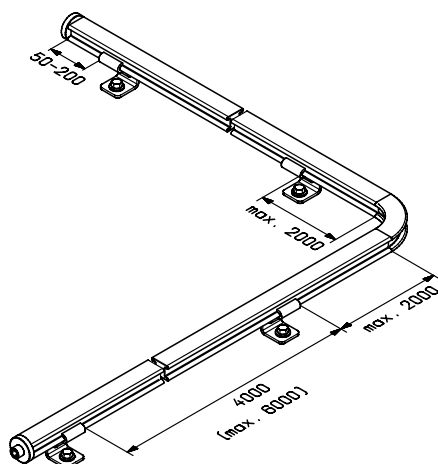
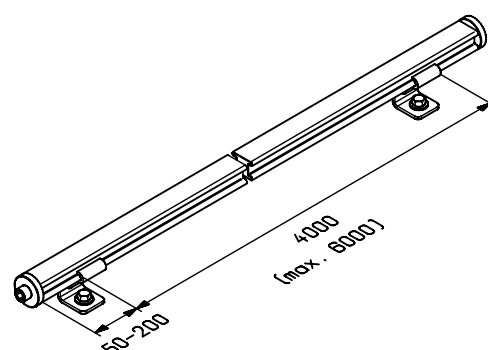
Subject to technical change. Please follow our maintenance and fitting instructions.

Söll MultiRail®

Planning aid for mounting distances

Straight course of the Söll MultiRail anchor device:
Rail projection at the last bracket: 50 - 200 mm

Mounting distance: Recommended 4,000 mm
 Maximum 6,000 mm



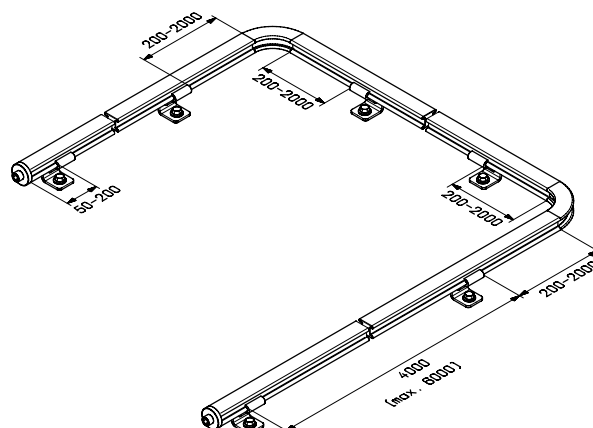
L-shape of the Söll MultiRail anchor device:
Distance of bracket to bend: max. 2,000 mm

Special shapes available after consulting the manufacturer

U-shape of the Söll MultiRail anchor device:
Distance of bracket to bend: 200 - 2,000 mm

Special shapes available after consulting the manufacturer

Endless/closed shape of the Söll MultiRail anchor device available only as an exception and after consulting the manufacturer



Subject to technical change. Please follow our maintenance and fitting instructions.

Söll MultiRail® Mobile anchor points

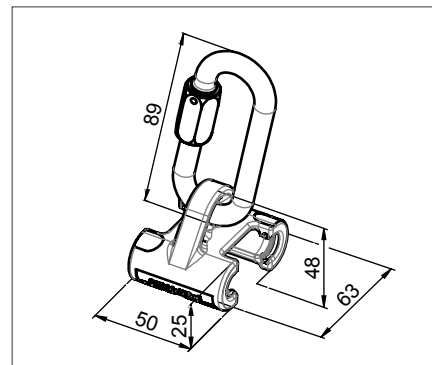
Closed glider

- With sliding inserts (made of polyamide) and eyelet

Material: Stainless steel, pickled

Weight: 0.5 kg/each

Part no. 17407



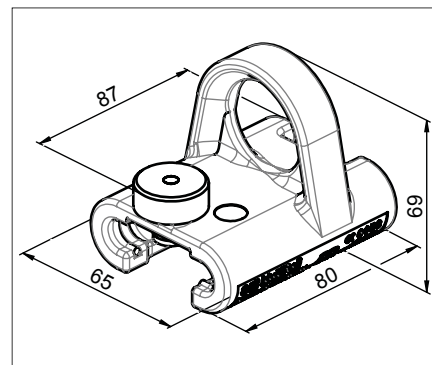
Lockable glider

- With sliding inserts (made of polyamide) and yellow eyelet

Material: Stainless steel, pickled

Weight: 0.65 kg/each

Part no. 26308



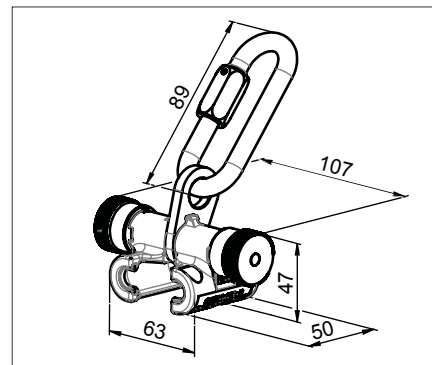
Openable glider

- With sliding inserts (made of polyamide) and eyelet
- Can be attached and removed at any point

Material: Stainless steel, pickled

Weight: 0.8 kg/each

Part no. 17792



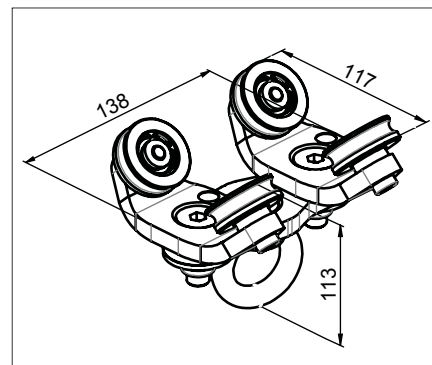
Wheeled trolley

- For overhead application
- To be used with a retractable type fall arrester
- With swivelable eyelet
- Can be used with rail end-stop (part no. 23956) and horizontal bend (part no. 17331)

Material: Stainless steel, pickled

Weight: 2.0 kg/each

Part no. 24168



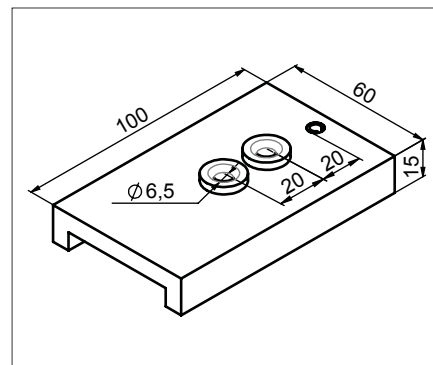
Subject to technical change. Please follow our maintenance and fitting instructions.

Söll MultiRail® Accessories

Drilling gauge

- Serves to make the component holes when the guide rails are shortened at the working site
- Can be clamped on the guide rail by a screw ferrule

Material: Aluminium
Weight: 0.2 kg/each
Part no. **23841**



Identification plate

- For Söll MultiRail anchor devices
- Must be affixed at each access point
- Dimensions: 150 x 70 mm
- Hole spacing: 135 x 56 mm; Ø . mm
- Languages: D/E/F/ES

Material: Aluminium
Weight: 0.1 kg/each
Part no. **25904**



Identification plate for rope access work

- For Söll MultiRail anchor devices
- Must be affixed at each access point
- Dimensions: 150 x 70 mm
- Hole spacing 135 x 56 mm Ø . mm
- Languages: D/E/F/ES

Material: Aluminium
Weight: 0.1 kg/each
Part no. **27238**



Söll MultiRail® Aluminium

- Horizontal anchor device
- Certified according to EN 795: 01 and CEN/TS 16415:2013



Subject to technical change. Please follow our maintenance and fitting instructions.

Söll MultiRail® Aluminium

Horizontal safety rail

- Available in lengths of 00 - 6,000 mm
- Mounting distance: recommended 4,000 mm - max. 6,000 mm

Material: Anodised aluminium

Weight: 2.7 kg/m

Sold by the metre

Part no. 26876

End piece sold by the metre

Part no. 26874

Standard length 3,000 mm

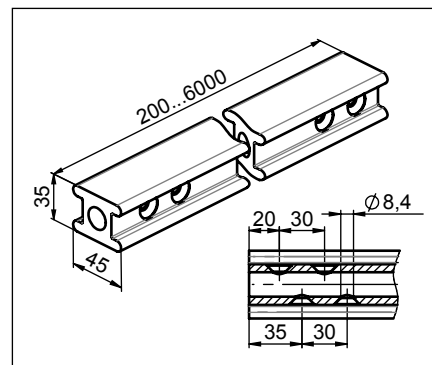
Weight: 9.0 kg/each

Part no. 26871

Standard length 6,000 mm

Weight: 18.0 kg/each

Part no. 26858



End piece standard length 3,000 mm

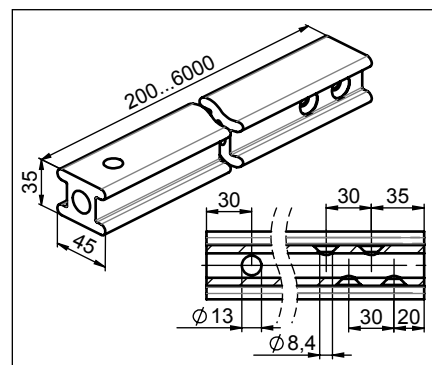
Weight: 8.0 kg/each

Part no. 26872

End piece standard length 6,000 mm

Weight: 16.0 kg/each

Part no. 26861



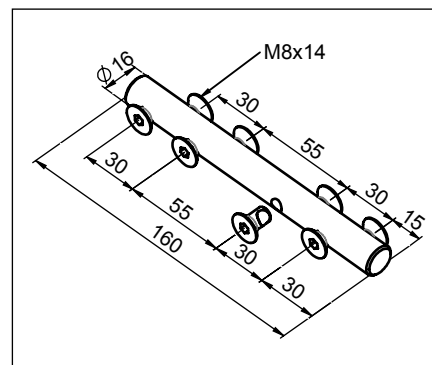
Connector

- For connecting individual rail sections

Material: Stainless steel, pickled

Weight: 0.4 kg/each

Part no. 26863



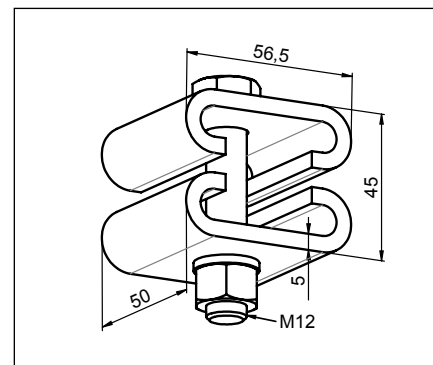
Subject to technical change. Please follow our maintenance and fitting instructions.

Söll MultiRail® Aluminium

Rail end-stop without exit

- To prevent the glider from coming off accidentally

Material: Stainless steel,
pickled
Weight: 0.4 kg/each
Part no. 26886



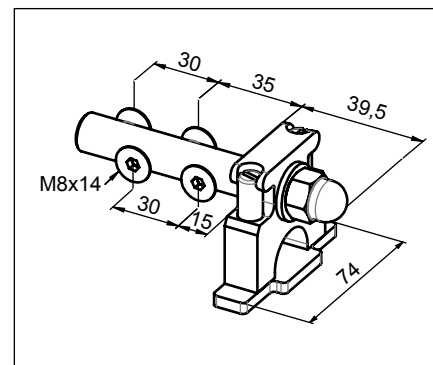
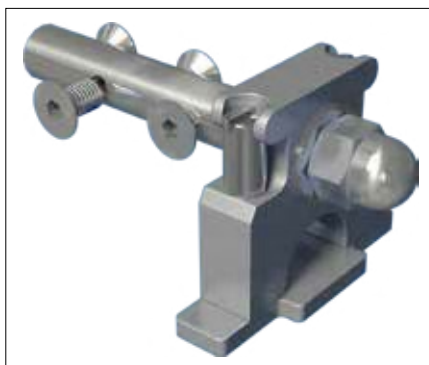
Rail end-stop with exit

- To prevent the glider from coming off accidentally
- Removal of the glider by pressing the opening mechanism with one hand

Material: Stainless steel,
pickled/
anodised aluminium

Weight: 0.4 kg/each

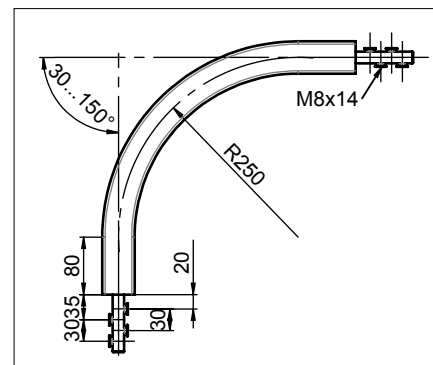
Part no. 26916



Horizontal bend

- For horizontal use as corner turn
- $R = 50 \text{ mm}$

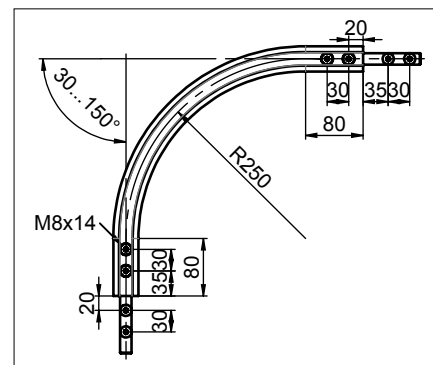
Material:	Anodised aluminium
Angle:	90°
Weight:	1.9 kg/each
Part no.	27058
Angle:	30 - 150°
Weight:	Depends on angle
Part no.	27059



Vertical bend

- For vertical use as corner turn
- R = 50 mm

Material:	Anodised aluminium
Angle:	90°
Weight:	1.9 kg/each
Part no.	27060
Angle:	30 - 150°
Weight:	Depends on angle
Part no.	27061



Subject to technical change. Please follow our maintenance and fitting instructions.

Söll MultiRail® Aluminium

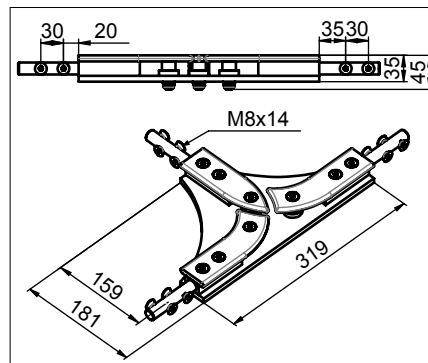
Horizontal track T-change

- For safe change of travel in two directions
- The rails must be at a 90° angle to one another
- Can only be used with closed glider (part no. 17407)

Material: Anodised aluminium/
Stainless steel, pickled

Weight: 2.1 kg/each

Part no. 26903



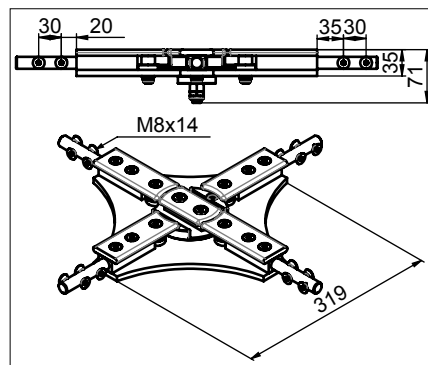
Horizontal track X-change

- For safe change of travel in four directions
- The rails must be at a 90° angle to one another
- Can only be used with closed glider (part no. 17407)

Material: Anodised aluminium/
Stainless steel, pickled

Weight: 3.8 kg/each

Part no. 26914



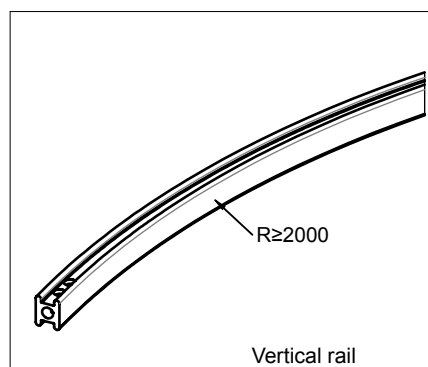
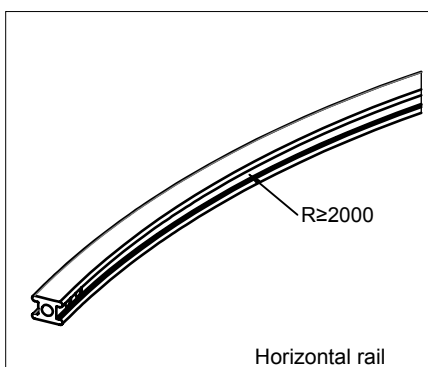
Summary of the smallest possible bending radii in mm
for the Söll MultiRail® Aluminium.

Horizontal bent rail

- Bending radius is at least 1,000 mm

Material: Anodcised
aluminium
Weight: 3.0 kg/m
Part no. 27131

Indicate the position of the rail (horizontal, vertical) when ordering.



Single bending

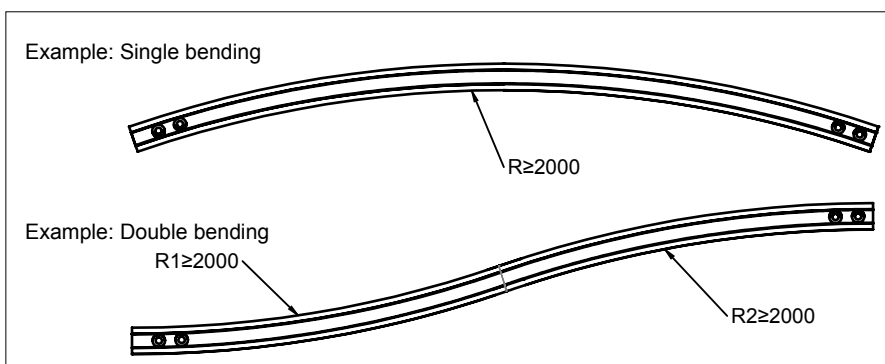
- Bending radius: min. 1,000 mm

Part no. 27130

Double bending

- Bending radius: min. 1,000 mm

Part no. Available upon request



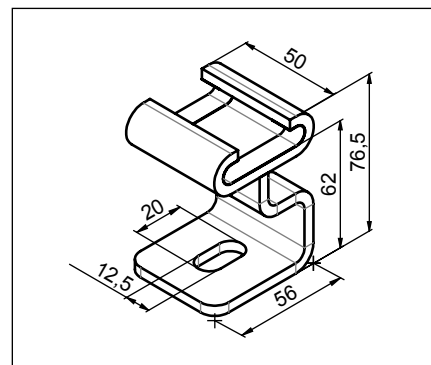
Subject to technical change. Please follow our maintenance and fitting instructions.

Söll MultiRail® Aluminium Fixings

Bracket 1

- With Teflon easy-slide ribbons
- The rail can move freely in the brackets
- For mounting screws M1
- Screw mounting surface parallel to the rail

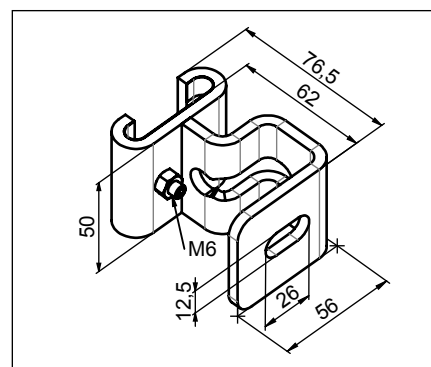
Material: Stainless steel, pickled
Weight: 0.4 kg/each
Part no. **17489**



Bracket 1 with clamping screw M6

- With Teflon easy-slide ribbons
- For mounting screws M1
- Screw mounting surface parallel to the rail

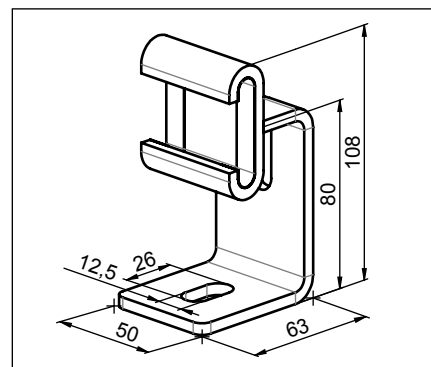
Material: Stainless steel, pickled
Weight: 0.4 kg/each
Part no. **20168**



Bracket 2

- With Teflon easy-slide ribbons
- The rail can move freely in the brackets
- For mounting screws M1
- Screw mounting surface at right angle to the rail

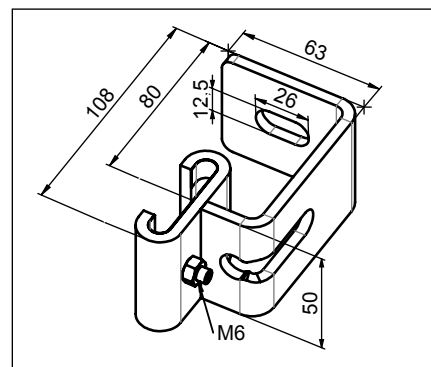
Material: Stainless steel, pickled
Weight: 0.4 kg/each
Part no. **17112**



Bracket 2 with clamping screw M6

- With Teflon easy-slide ribbons
- For mounting screws M1
- Screw mounting surface at right angle to the rail

Material: Stainless steel, pickled
Weight: 0.4 kg/each
Part no. **20167**



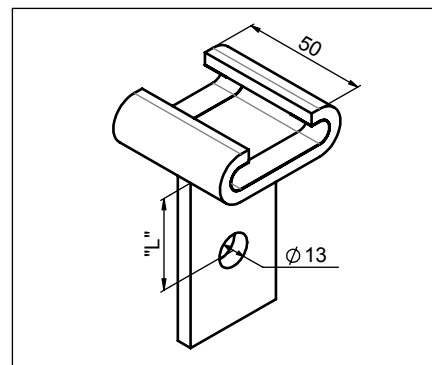
Subject to technical change. Please follow our maintenance and fitting instructions.

Söll MultiRail® Aluminium Fixings

Bracket 5

- With Teflon easy-slide ribbons
- The rail can move freely in the brackets
- For overhead application
- For mounting screws M1
- Projection 'L': max. 00 mm (please indicate when ordering)

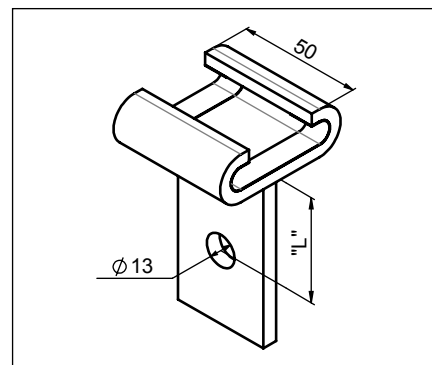
Material: Stainless steel, pickled
Weight: 0.4 kg/each
Part no. **21031**



Bracket 7

- With Teflon easy-slide ribbons
- The rail can move freely in the brackets
- For overhead application
- For mounting screws M1
- Projection 'L': max. 00 mm (please indicate when ordering)

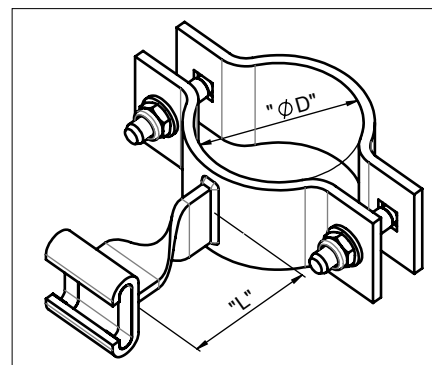
Material: Stainless steel, pickled
Weight: 0.4 kg/each
Part no. **21677**



Clamp

- With Teflon easy-slide ribbons
- The rail can move freely in the brackets
- Projection 'L': 80 - 00 mm
- Complete with all mounting elements
- Please indicate projection 'L' when placing the order

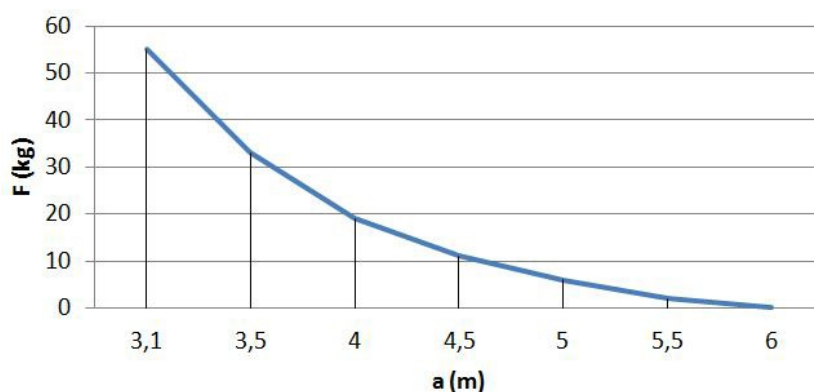
Material: Stainless steel, pickled
Weight: Depends on size
Part no. **MR-BS-1AUSL-<Ø in mm>**



Recommended mounting distance 'a' when using a wheeled trolley with a retractable type fall arrester

Load 'F' definition:

self-weight of retractable type fall arrester +
max. retraction load of the retractable type fall arrester



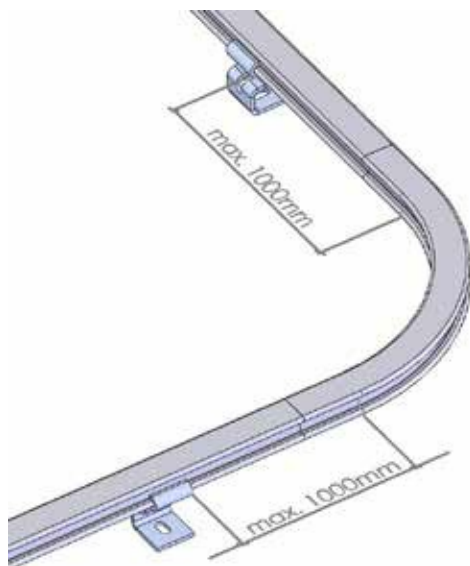
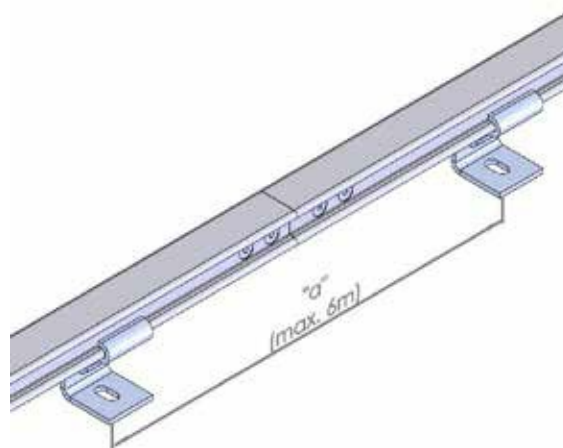
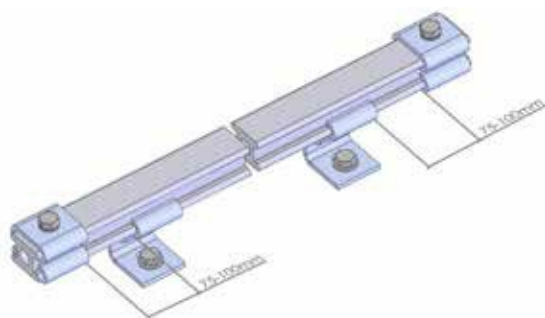
Subject to technical change. Please follow our maintenance and fitting instructions.

Söll MultiRail® Aluminium Planning aid for mounting distances

Straight course of the Söll MultiRail® Aluminium anchor device:

Rail projection at the last bracket: 75 - 100 mm

Mounting distance: Recommended 4,000 mm
Maximum 6,000 mm



L-shape of the Söll MultiRail® Aluminium anchor device:

Distance of bracket to bend: max. 1,000 mm

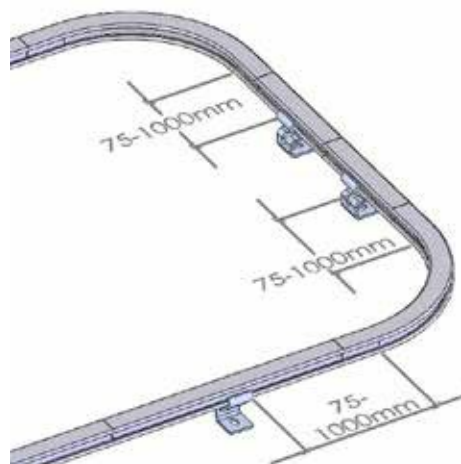
Special shapes available after consulting the manufacturer.

U-shape of the Söll MultiRail® Aluminium anchor device:

Distance of bracket to bend: 75 - 1,000 mm

Special shapes available after consulting the manufacturer

Endless/closed shape of the Söll MultiRail (aluminium) anchor device available only as an exception and after consulting the manufacturer



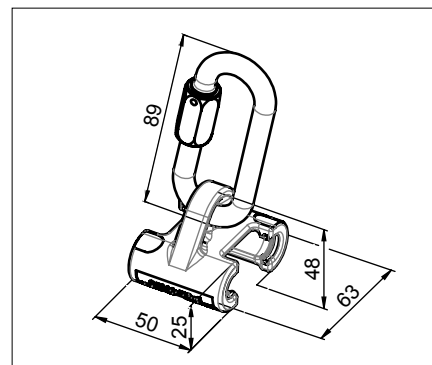
Subject to technical change. Please follow our maintenance and fitting instructions.

Söll MultiRail® Aluminium Mobile anchor points

Closed glider

- With sliding inserts (made of polyamide) and eyelet

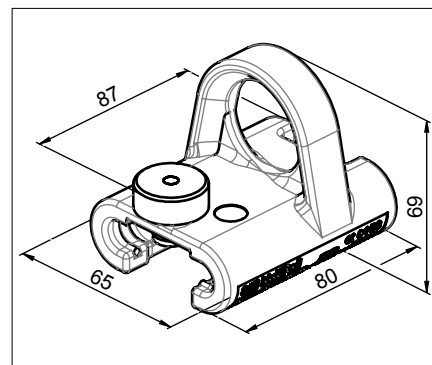
Material: Stainless steel, pickled
Weight: 0.5 kg/each
Part no. **17407**



Lockable glider

- With sliding inserts (made of polyamide) and yellow eyelet

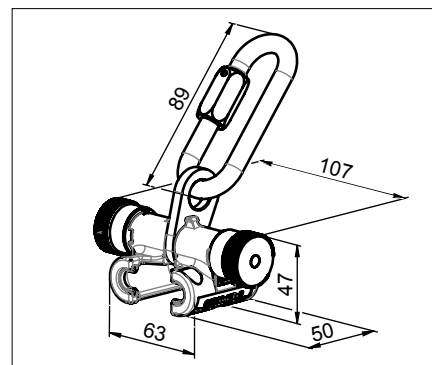
Material: Stainless steel, pickled
Weight: 0.65 kg/each
Part no. **26308**



Openable glider

- With sliding inserts (made of polyamide) and eyelet
- Can be attached and removed at any point

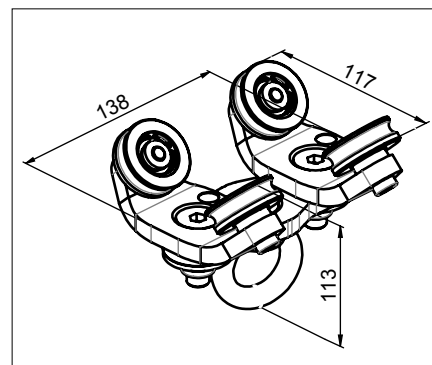
Material: Stainless steel, pickled
Weight: 0.8 kg/each
Part no. **17792**



Wheeled trolley

- For overhead application
- To be used with a retractable type fall arrester
- With swivelable eyelet
- Can be used with rail end-stop (part no. 26916) and horizontal bend (part no. 27058)

Material: Stainless steel, pickled
Weight: 2.0 kg/each
Part no. **24168**



Subject to technical change. Please follow our maintenance and fitting instructions.

Söll MultiRail® Aluminium Accessories

Identification plate

- For Söll MultiRail® Aluminium anchor devices
- Dimensions: 150 x 70 mm
- Hole spacing 135 x 56 mm, Ø . mm
- Languages: D/E/F/ES

Material: Aluminium
Weight: 0.1 kg/each
Part no. **26990**



Drilling gauge

- Serves to make the component holes when the guide rails are shortened at the working site
- Can be clamped on the guide rail by a screw ferrule

Material: Aluminium
Weight: 0.5 kg/each
Part no. **26917**

